

# XWEB EVO

Supervisor and Monitoring Systems



**DIXELL**™

  
**EMERSON**™

# XWEB EVO



## Supervisor and monitoring systems

The well-known XWEB EVO family for the optimum management of Retail field and HVAC/R applications, is even more enhanced today thanks to the web user interface developed to allow easier and faster access to information.

The look displays immediate and clear information; the unique interface allows the user to have the same rich user experience even for local (XWEB3000/5000), remote (via PC) or mobile (via tablet and smartphone) access.

Furthermore, systems are provided with a customizable web user interface for navigation without any additional software. XWEB EVO is designed to obtain energy savings, thereby reducing running costs and helping preserve the environment. Our solutions are synonymous with quality, user-friendliness, and efficiency because they are focused to meet end user needs.



### Alarm management

An effective alarm management system easily detects and signals alarm status so prompt intervention can restore optimum functioning of the application.



### Food quality

Constant data recording, HACCP reports and timely alarm notification guarantee high quality of fresh and frozen food and is in compliance with the UNI EN 12830 rule.



### High connectivity

A powerful hardware platform with USB, Ethernet, RS485 ports, and more, offers the maximum level of connectivity.



### Energy saving

Special algorithms and continuous tracking of energy usage optimizes the application's efficiency by increasing energy savings and reducing costs.



### High integration

The user interface is available for modern Web browsers without the need to install additional software. XWEB EVO is also compatible with HD and touch-screen technologies and tablets.

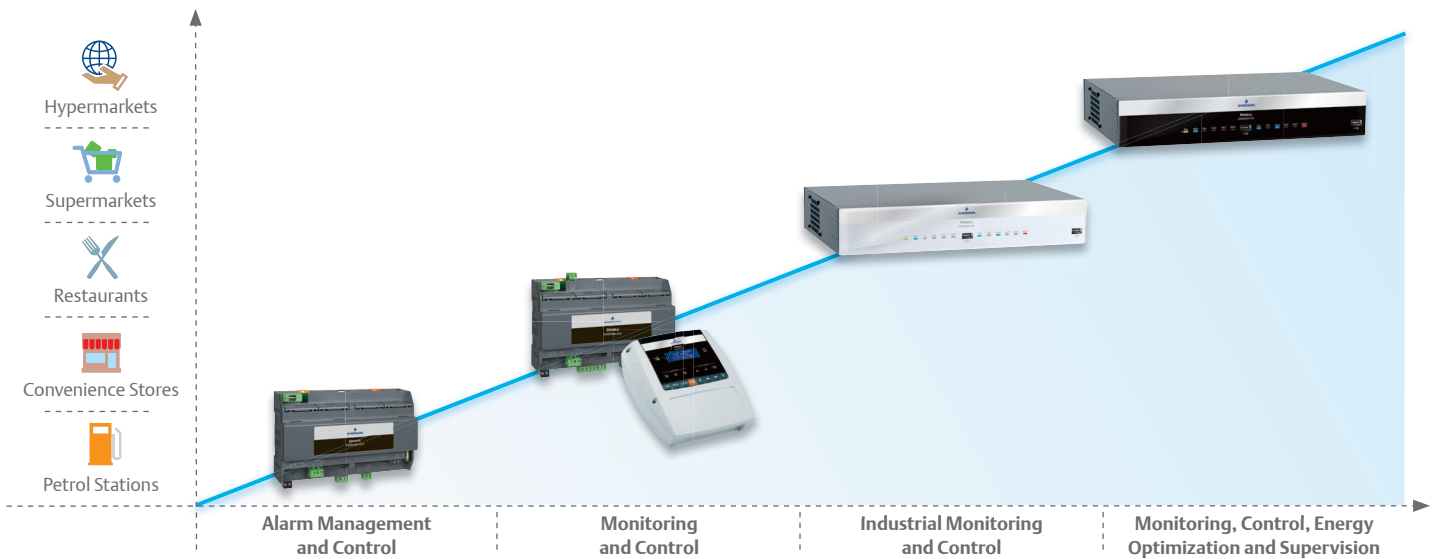


### Environmentally friendly

With our eco-friendly solutions, innovation and efficiency means respecting the environment by optimizing consumption and reducing pollution, gas emission and waste.

## The scalable solutions

The XWEB EVO Series offers maximum adaptability suitable for every kind of application, from petrol station, to hypermarket, convenience store and restaurant chains.



## Supervisor and monitoring solution for retail

With its powerful hardware platform, Web technology architecture and a complete range of dedicated functions, XWEB EVO is the right choice for the Retail environment.

### AIR CONDITIONING, LIGHTING, LEAK DETECTION & ENERGY MONITORING



### COMPRESSOR RACKS & CO<sub>2</sub> SOLUTIONS



CO<sub>2</sub>

### CASES & COLD ROOMS



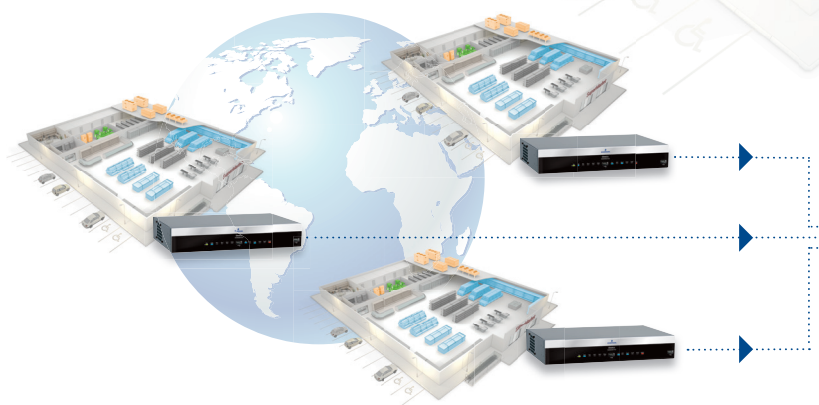
### SUPERVISOR & MONITORING SOLUTIONS



### ENTERPRISE MANAGEMENT SOFTWARE

#### ProAct Connect+

- Alarm Management
- Energy Monitoring & Targeting Reports
- Setpoint Management
- Site Administration
- Food Quality Reports



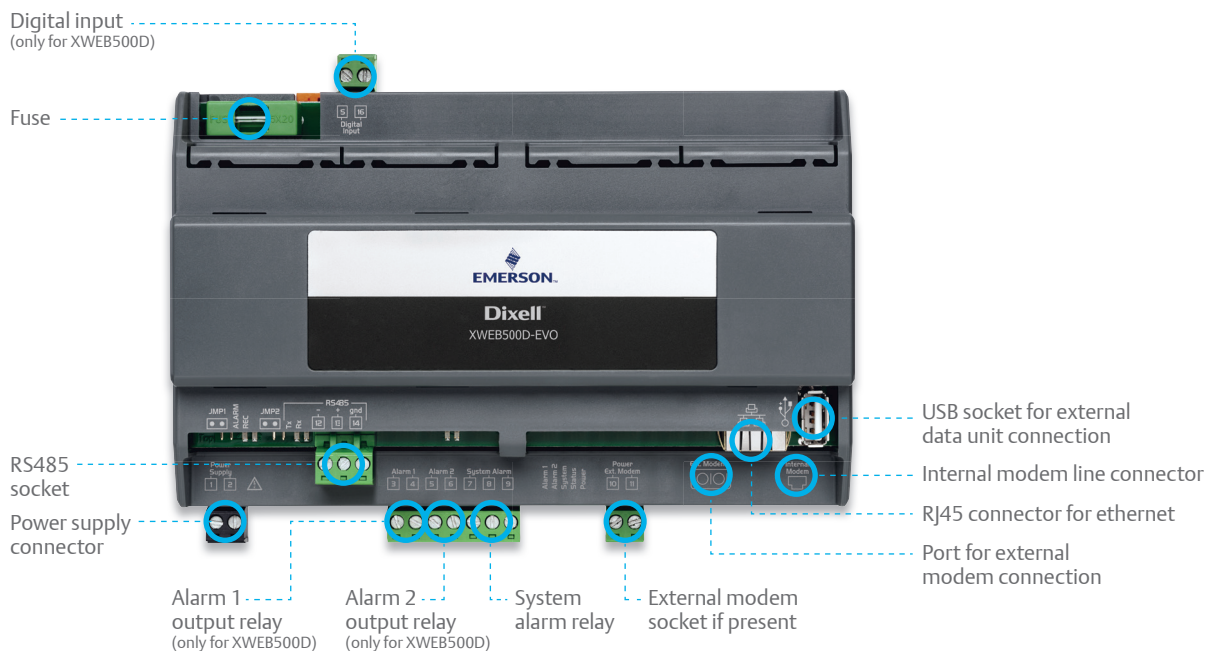
# XWEB300D EVO



## Alarm management and controlling web server

It is extremely well suited for 6 or 18 device installations such as petrol stations, mini-market, small storage centres. XWEB300D EVO is the ideal solution for the remote assistance to the plant. Connection from PC is made simply using standard web browser; the information is displayed as web pages.

- 10DIN Rail module directly inside the machine board or wall mounting with brackets
- Up to 1 year temperature recording
- Optimized controller values visualization via “Single View” and “Overview” functions
- Possibility to modify the parameters of the connected devices remotely
- Automatic data export to USB pendrive
- Alarm notification via SMS or e-mail



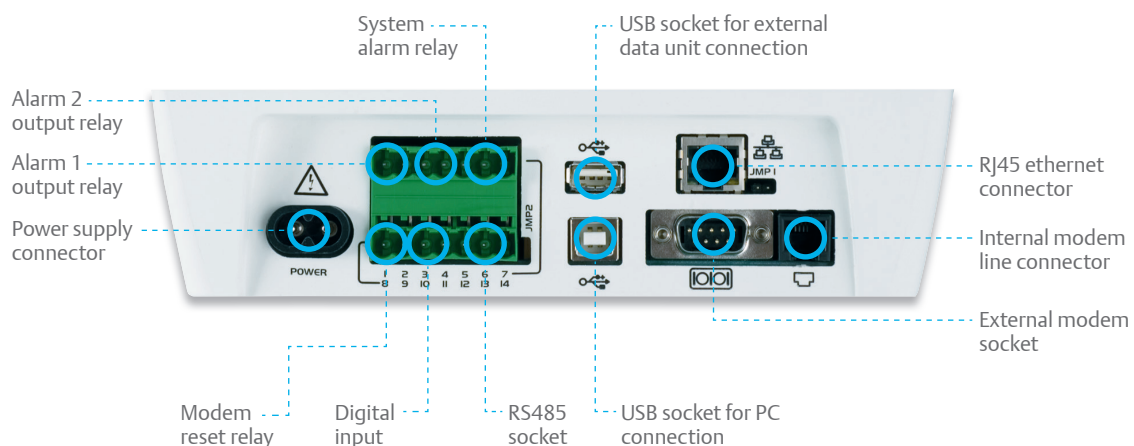
# XWEB500D EVO & XWEB500 EVO



## Monitoring and controlling web server

They are the ideal solution for medium installations up to 36, 50 or 100 devices, such as petrol stations, supermarkets or storage centers. Their innovative and useful features make the instrument suitable for medium-large applications such as production and storage goods centers. Thanks to the two available formats, they can be installed whether on DIN Rail or wall or panel mounting, but can also be used as desk instrument. Connection from PC is made simply using standard web browser; the information is displayed as web pages.

- 10DIN Rail module directly inside the machine board or wall mounting with brackets (XWEB500D EVO)
- Up to 1 year temperature recording
- Optimized controller values visualization via “Single View” and “Overview” functions
- Stand alone usage thanks to the back lit LCD local display and keyboard (XWEB500 EVO)
- Possibility to modify the parameters of the connected devices remotely
- Customizable web user interface (layout)
- Performance meter for cooling demand control
- Automatic data export to USB pendrive
- Easy plant management by means of the “Scheduler” to send commands according to a custom calendar
- Alarm notification via SMS or e-mail
- HACCP report print-out in pdf format
- CRO for compressor rack optimization



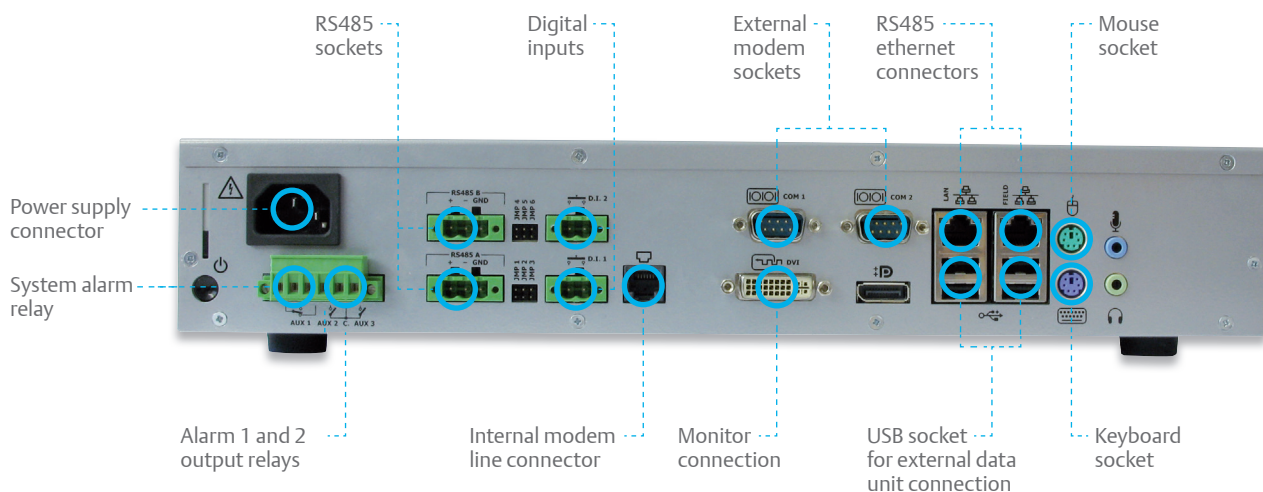
# XWEB3000 EVO



## Industrial monitoring and controlling web server

It is designed for larger installations with up to 494 devices such as supermarkets, hypermarkets or large storage and distribution centers as well as production and storage goods processing such as fast-food, restaurants and catering applications. XWEB3000 EVO is the ideal solution to fulfill customer service needs thanks to the remote connection. It allows users to control the temperature, to print-out reports and more operating even without using a PC but simply connecting it to a monitor, keyboard and mouse. Connection from PC is made simply using standard web browser; the information is displayed as web pages.

- 19" RACK or desk mounting
- Up to 1 year temperature recording
- Optimized controller values visualization via "Single View" and "Overview" functions
- Dual instrument network to increase safety and total length (up to 2Km)
- Possibility to modify the parameters of the connected devices remotely
- Customizable web user interface (layout)
- Performance meter for cooling demand control
- Easy plant management by means of the "Scheduler" to send commands according to a custom calendar
- Alarm notification via SMS or e-mail
- HACCP report print-out in pdf format



# XWEB5000 EVO



## Monitoring, controlling and supervisor web server

It is provided with a powerful supervisor engine suited for larger installations (with up to 494 devices) in the refrigeration, conditioning and building automation field, where it is necessary to program several different interactive actions that the controller has to perform. It is extremely well suited to hypermarkets, large storage and distribution centres, as well as production and storage goods processing and it is ideal for customer service centers. The system manages the alarm transmission to the “in charge” service (via e-mail, SMS and also through relay outputs). No PC is necessary using direct connection of a monitor, keyboard and mouse.

- 19" RACK or desk mounting
- Up to 1 year temperature recording
- Optimized controller values visualization via “Single View”, “Run Time” and “Overview” functions
- Dual instrument network to increase safety and total length (up to 2Km)
- Possibility to modify the parameters of the connected devices remotely
- Customizable web user interface (layout)
- Performance meter for cooling demand control
- Easy plant management by means of the “Scheduler” to send commands according to a custom calendar
- Alarm notification via SMS or e-mail
- HACCP report print-out in pdf format
- Powerful supervising engine with embedded editor and field simulator
- CRO for compressor rack optimization
- Dew point for anti-sweat heater control



## Supervision

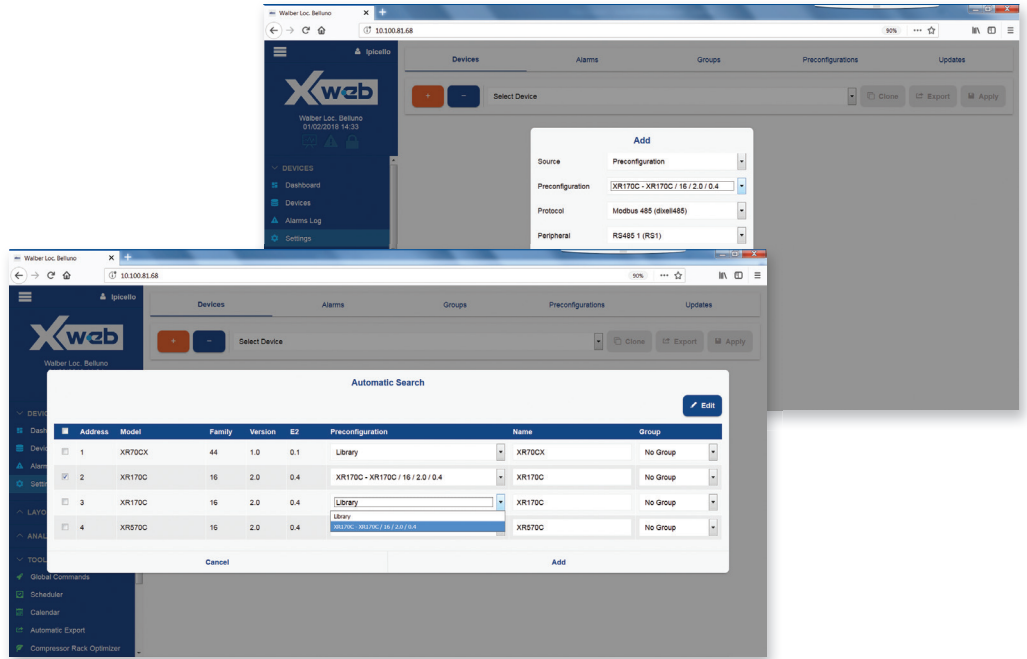
With XWEB5000 EVO it is possible to intervene sending commands to monitored units with algorithm made by the installer. He can quickly and easily create supervision “Projects” by programming links between the input variables (inputs, status and outputs of a controller) and defining what actions the system must take when these conditions are met; several projects can run simultaneously. It’s possible, for example, to manage the use of plant lights, internal or external signs, the battery charge/discharge as fork lifts, increasing the energy saving. In case of compressor fault or when the absorption threshold exceeds the set, the monitoring unit take actions to interact with the rest of system.



# XWEB EVO functions

The XWEB EVO family provides the user with special functions for the control of connected units; they are user-friendly thanks to an intuitive and easy interface.

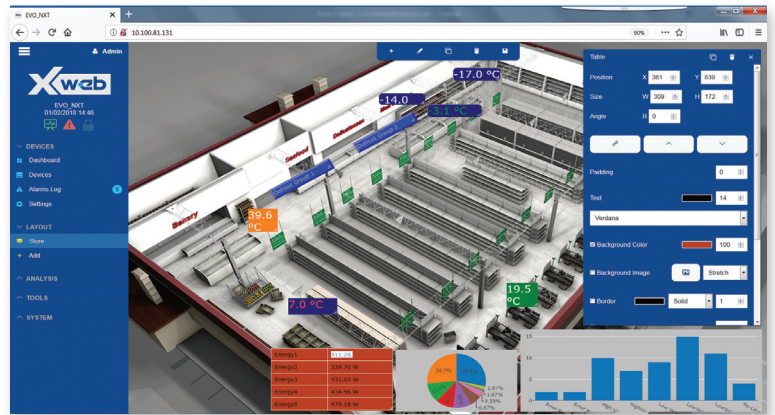
This new function is sought after and appreciated by OEMs because it allows quick access of instrument preconfigurations during the installation time.



## Layout

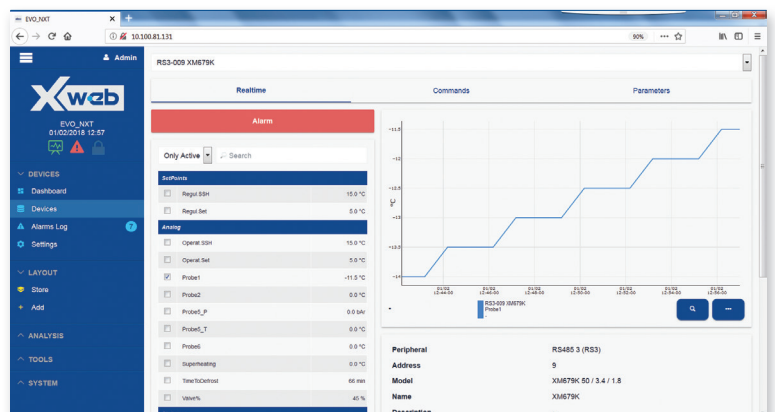
A new powerful graphic editor makes XWEB layout the ideal solution to create tailored floorplans according to customer needs.

Using this function, the user can quickly access controller data and even send a command to a controller.



## Device view

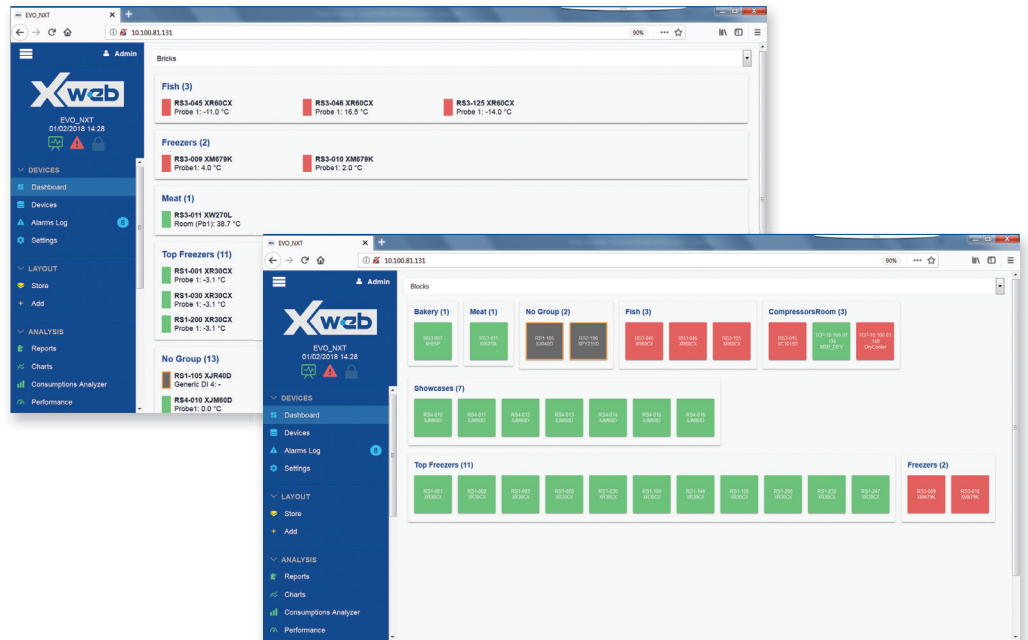
This powerful tool allows the user to have access to the recent status of the single controller updated in real time, send commands to the controller (for example, force a defrost), adjust the set point, or modify its parameters. The parameter map can be exported into various formats: CVS/XLS/WIZMATE and can be reused with other controllers within the same system or a different system.





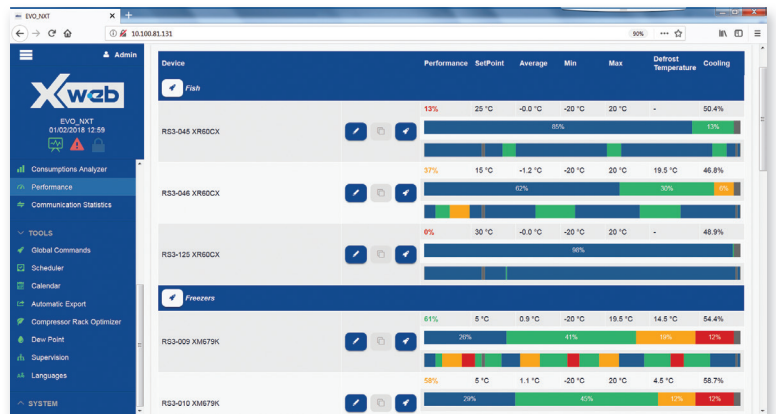
## Dashboard

The new Dashboard allows the user to choose among different layout options that are available on XWEB for an easier and even more responsive navigation.



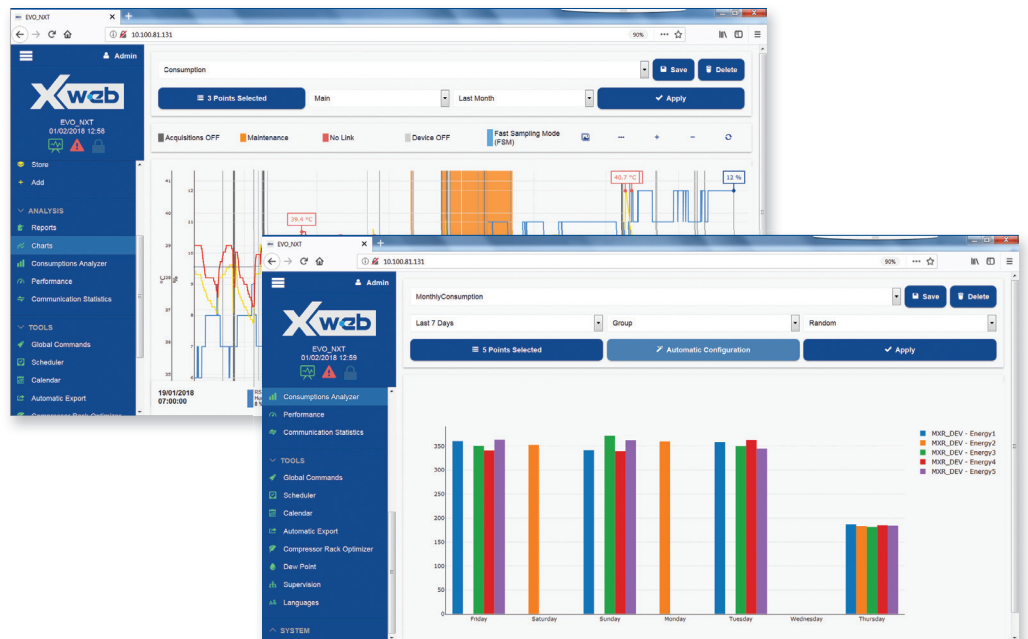
## Performance meter

This highly appreciated function allows users to verify the right temperature for single devices (wall cabinets, rooms, and more). The graphical layout offers a complete view of the plant operating mode. The new automatic configuration makes the use of this function faster and easier.



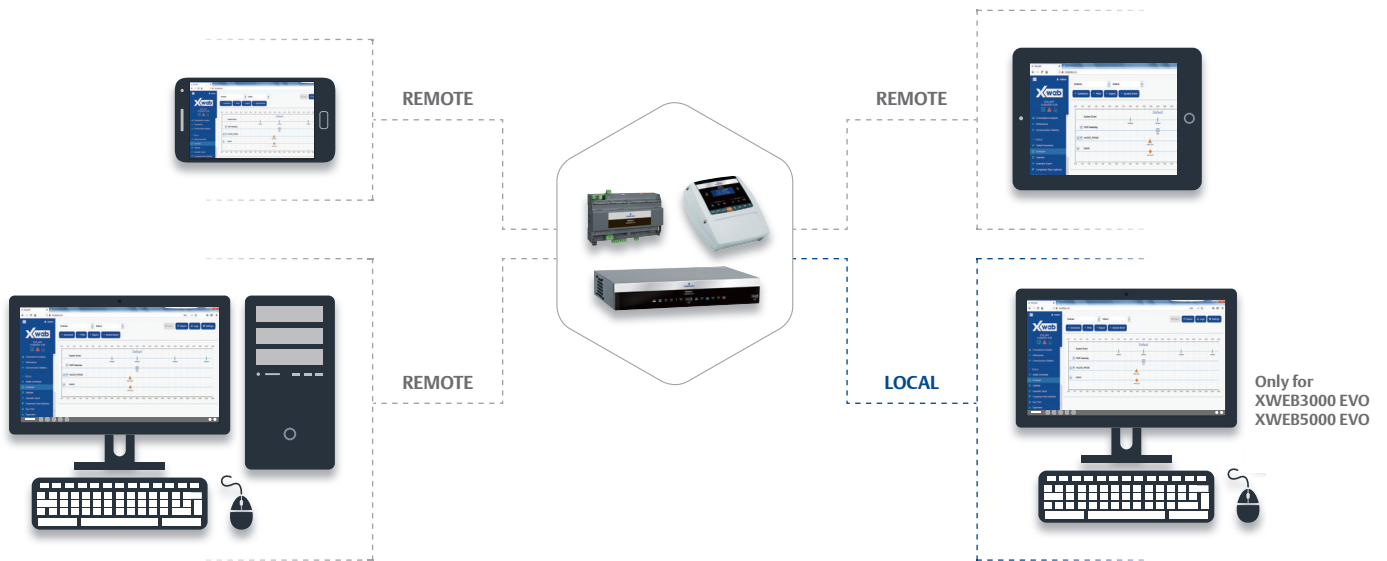
## Energy consumption

The user can easily retrieve the consumption data thanks to the bar charts and quickly analyze the plant energy efficiency.



## Unique interface

The XWEB EVO web interface automatically adapts to each kind of device. The same look is available for PC, tablet, smartphone and XWEB3000/5000 local interface, ensuring the same completeness of information for mobile devices.



## XWEB EVO connections

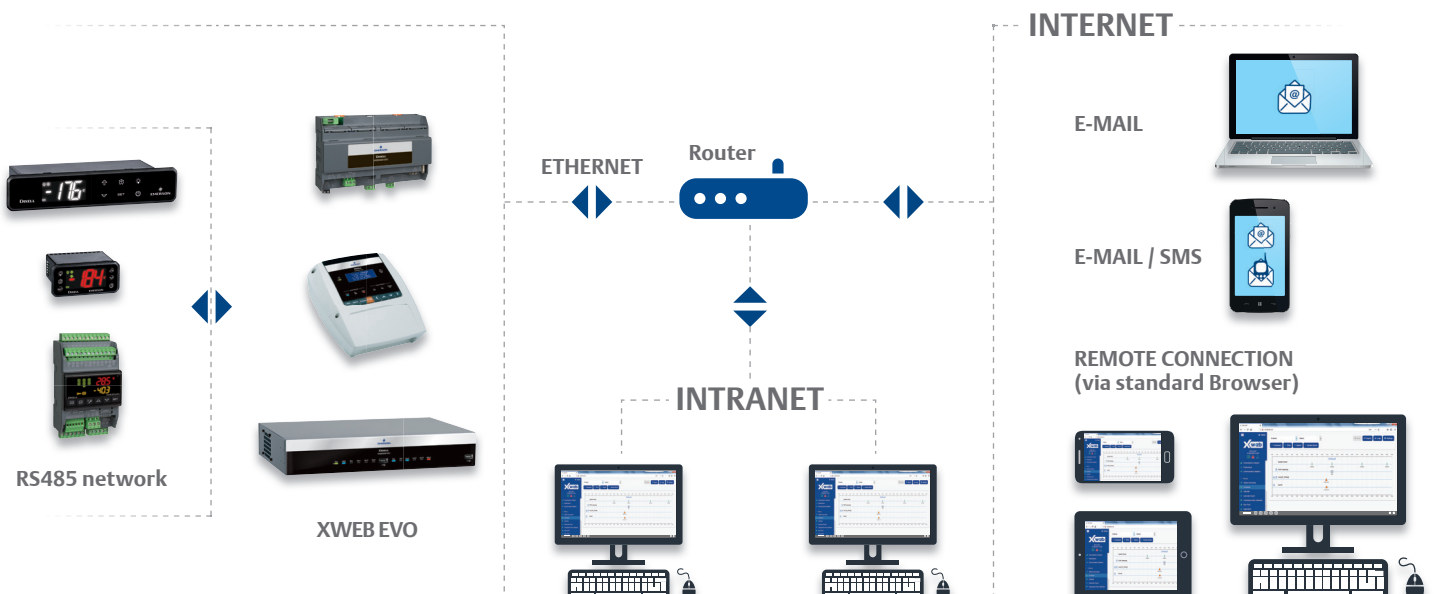
### Local connections

XWEB EVO systems can be connected directly to a PC. Furthermore, XWEB3000 EVO and XWEB5000 EVO can be used in stand-alone mode through a monitor, keyboard and mouse connection because of their complete and powerful hardware platform.

### Remote connections

XWEB EVO systems servers can be remotely accessed using several methods:

- by modem with point to point connection;
- by Ethernet network with standard net connector RJ45;
- by Internet connection, once provided a public and static IP address.



## XWEB EVO guide

	XWEB300D EVO	XWEB500D EVO	XWEB500 EVO	XWEB3000 EVO	XWEB5000 EVO
<b>Applications</b>	small and medium	medium and large	medium and large	large	large with supervision
<b>Format</b>	10 DIN Rail	10 DIN Rail	210x230x87h	350x235x47h	350x235x47h
<b>Power supply</b>	24Vac or 100±230Vac	24Vac or 100±230Vac	100±230Vac	100±230Vac	100±230Vac
<b>Display</b>			LCD embedded	external via VGA port	external via VGA port
<b>N° of instruments</b>	6 - 18	36 - 50 - 100	36 - 50 - 100	494	494
<b>USB socket</b>	1	1	1	6	6
<b>Relay output</b>	1	3	3	3	3
<b>Digital input</b>		1	1	2	2
<b>Ethernet socket</b>	1	1	1	2	2
<b>RS485 socket</b>	1	1	1	2	2
<b>External modem support</b>	•	•	•	•	•
<b>RS485 line check</b>	•	•	•	•	•
<b>Parameter programming</b>	•	•	•	•	•
<b>Dashboard</b>	•	•	•	•	•
<b>Device view</b>	•	•	•	•	•
<b>Fast Sampling Mode</b>	•	•	•	•	•
<b>Charts</b>	•	•	•	•	•
<b>Data Export to Excel®</b>	•	•	•	•	•
<b>Circular graphics (high resolution charts)</b>	6h	6h	6h	48h	48h
<b>Real time graphics</b>	•	•	•	•	•
<b>System logs</b>	•	•	•	•	•
<b>User setup</b>	•	•	•	•	•
<b>Device setup</b>	•	•	•	•	•
<b>System setup</b>	•	•	•	•	•
<b>Calendar setup</b>	•	•	•	•	•
<b>System update</b>	•	•	•	•	•
<b>Alarm setup</b>	•	•	•	•	•
<b>Connect+ support</b>	•	•	•	•	•
<b>ModBUS TCP/IP gateway</b>	•	•	•	•	•
<b>TCP/IP API protocol</b>	•	•	•	•	•
<b>Backup/restore</b>	•	•	•	•	•
<b>Data log status</b>	•	•	•	•	•
<b>Automatic export module</b>	•	•	•	•	•
<b>Language manager</b>	•	•	•	•	•
<b>Consumption analyzer</b>	•	•	•	•	•
<b>HACCP report</b>		•	•	•	•
<b>Food quality report</b>		•	•	•	•
<b>Layout</b>		•	•	•	•
<b>Global commands</b>		•	•	•	•
<b>Alarms on XJR40D module</b>		•	•	•	•
<b>Scheduler</b>		•	•	•	•
<b>CRO module</b>		•	•	•	•
<b>Performance meter</b>		•	•	•	•
<b>Dew point module</b>					•
<b>Supervision module</b>					•

EmersonClimate.eu

**Emerson Commercial & Residential Solutions**

Dixell S.r.l. - Z.I. Via dell'Industria, 27 - 32016 Alpago (BL) ITALY - Tel. +39.0437.9833 r.a. - Fax +39.0437.989313  
[climate.emerson.com/en-gb/brands/Dixell](http://climate.emerson.com/en-gb/brands/Dixell) - [Dixell@Emerson.com](mailto:Dixell@Emerson.com)

release 2.0 - 1582006250-GB

All trademarks are property of their respective owners. Dixell reserves the right to alter its products without notice. All rights reserved.  
Because environmental conditions are outside of Dixell's control, we cannot assume liability for results obtained nor any damages that may occur due to improper application. Manuals and updates are available on [climate.emerson.com/en-gb/brands/Dixell](http://climate.emerson.com/en-gb/brands/Dixell)

**EMERSON. CONSIDER IT SOLVED.™**